

DATUM FOR SOUNDINGS: Soundings are relative to Admiralty Chart Datum (A.C.D.). A.C.D. is 2.72 metres below O.D. Newlyn. Negative numbers indicate heights above datum. Positive numbers indicate depths below datum.

SCALE 1:500
(When plotted at A1)

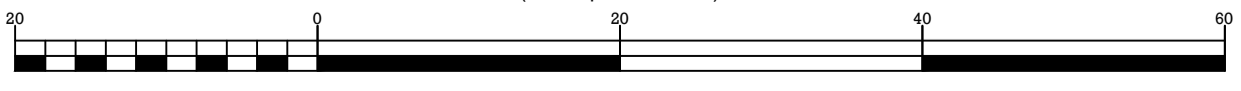
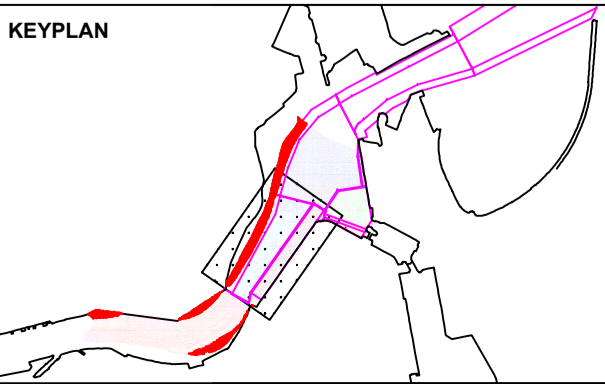


Chart to scale only if printed at correct plot size



SURVEY PARAMETERS AND EQUIPMENT

Survey Vessel	66k	Spheroid	AIRY
Primary Positioning System	Coda Octopus F185+R with VRS	Grid System	UK National Grid
Secondary Positioning System		Transformation	OSTN15
Tidal Reduction	UKD Tide Gauge (UKDR-TG02)	Geoid Model	OSGM15
Echosounder	Reson 7125 SV2	Vertical Datum	Admiralty Chart Datum
Motion Reference Unit	Coda Octopus F185+R		

UK DREDGING
Queen Alexandra House,
Cargo Road, Cardiff, CF10 4LY
Tel: 02920 835200
www.ukdredging.co.uk
ukd@abports.co.uk

UKD is a wholly owned division of Associated British Ports.

SUNDERLAND COPORATION QUAY

SURVEYED:	Clydeside	07/07/20	Post Dredge
PROCESSED:	Clydeside	07/07/20	
DRAWN:	UKD	08/07/20	PRO460/CQ/20.6

Whilst every care has been taken in the preparation of the information relating to the soundings shown on this chart, UK Dredging make no warranty as to its accuracy and will not accept responsibility, however arising, for any inaccuracies or omissions or for any consequences arising there from. UK Dredging own copyright and database rights in relation to this publication (including the hydrographic soundings). Reproduction or dissemination of part or all of the contents of this publication in any form is prohibited other than with the express written permission of UK Dredging.